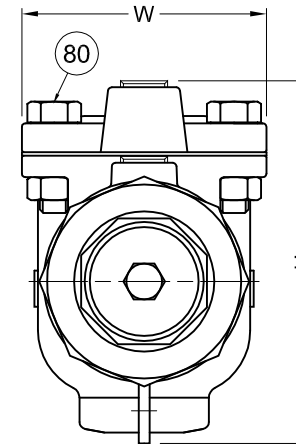
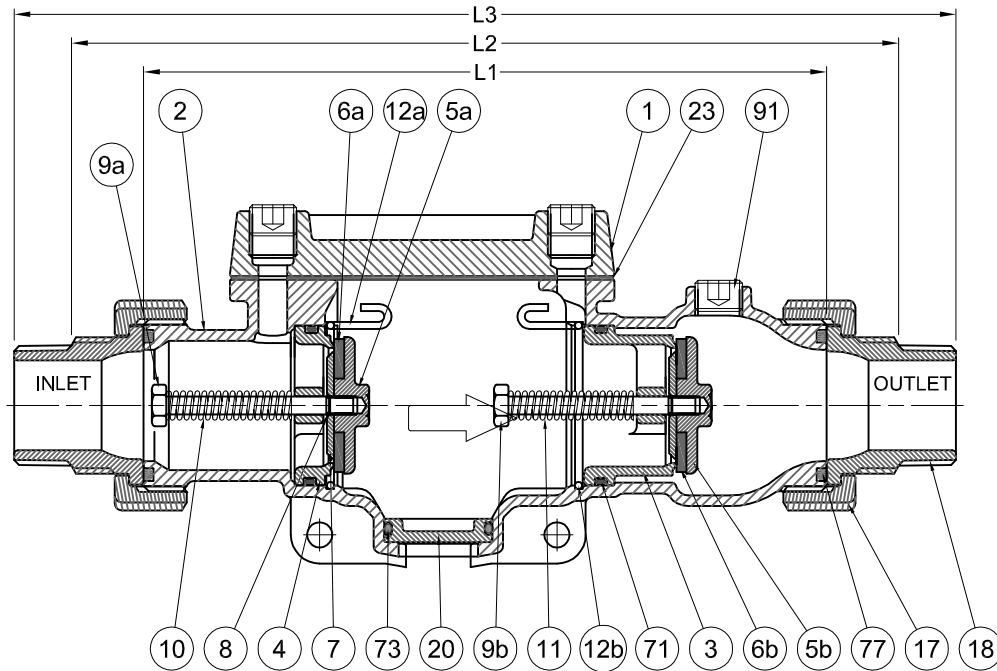
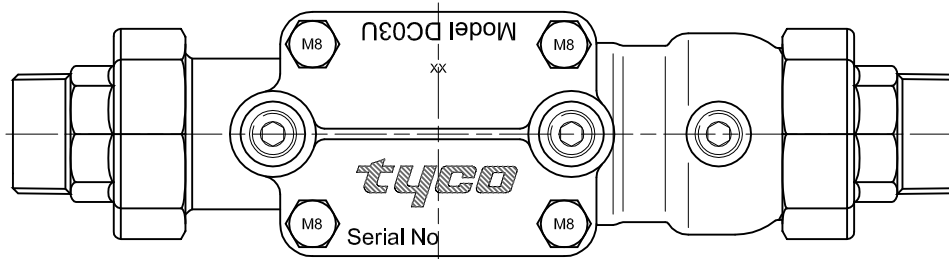


If in doubt - ASK !!



ITEM	DESCRIPTION	MATERIAL	MATERIAL CODE
1	TOP COVER	CAST CF8 304 SS	ASTM A 351 CF8 (304 Cast)
2	BODY	CAST CF8 304 SS	ASTM A 351 CF8 (304 Cast)
3	Down-Stream CHECK SEAL PLATE	CAST CF8 304 SS	ASTM A 351 CF8 (304 Cast)
4	Up-Stream CHECK SEAL PLATE	CAST CF8 304 SS	ASTM A 351 CF8 (304 Cast)
5	CHECK DISC	CAST CF8 304 SS	ASTM A 351 CF8 (304 Cast)
6	CHECK SEAL	EPDM	EPDM to AS 4020
7	CHECK SEAL RETAINER	304 SS BAR STOCK	ASTM A 289 Gr 304 SS
8	CHECK SEAL RETAINER CIRCLIP	304 SS	ASTM A 313 Gr 304 SS
9	CHECK VALVE STEM	304 SS BAR STOCK	ASTM A 289 Gr 304 SS
10	UP-STREAM SPRING	304 SS	ASTM A 313 Gr 304 SS
11	DOWN-STREAM SPRING	304 SS	ASTM A 313 Gr 304 SS
12	CHECK ASSEMBLY CIRCLIP	304 SS	ASTM A 313 Gr 304 SS
17	RING NUT	CAST CF8 304 SS	ASTM A 351 CF8 (304 Cast)
18	TAIL	CAST CF8 304 SS	ASTM A 351 CF8 (304 Cast)
20	RELIEF VENT PLUG	CAST CF8 304 SS	ASTM A 351 CF8 (304 Cast)
71	CHECK SEAL PLATE O'RING	NITRILE	NITRILE to AS 4020
73	RELIEF VENT PLUG O'RING	NITRILE	NITRILE to AS 4020
77	RING AND TAIL O'RING	NITRILE	NITRILE to AS 4020
80	COVER RETAINER BOLT AND NUT	304 SS	ASTM A 193 Gr B8 (304 SS Nuts) ASTM A 194 Gr 8 (304 SS Bolts)
91	1/4" BSPT PLUG	DR BRASS or St/Steel	AS 1567 / UNS C48600 / AS 3688

Dimensions in mm					Mass kg
L1	L2	L3	W	H	
190	230	262	68	100	2.6

Description			
Tyco Backflow Systems Valve ASSEMBLY - Dual Check Valve Model No DC03U			
Drawn	M.V.P.	Checked	-
Date	11.12.03	Amendment	-
Scale	.75 : 1	Date	-
Contract Dwg N°			-

This drawing is the property of TYCO Flow Control Pacific Pty. Ltd. and is protected by copyright. The user agrees that, in consideration of TYCO lending the drawing to the user, this drawing will be used only for the purposes authorised by TYCO, the user will return this drawing with all copies and reproductions to TYCO upon request.

tyco / Flow Control / Backflow Systems

A division of TYCO Flow Control Pacific Pty Ltd ACN 000922690 1189 Kingsford Smith Drive Eagle Farm 4009 Qld. Australia Telephone: (07) 3260 2555 Fax: (07) 3260 2142

MATERIAL SPECIFICATION REFER TO PRODUCT INFORMATION SHEET DESIGNED AND MANUFACTURED TO: AS/NZS 2845.1:2010. END CONNECTIONS: to AS 1722.1, R' Series

Approved		-
Base Dwg N°		GA-DC03U25-60
Dn 015, 020, & 025mm.		
Contract Dwg N°		-

A3