

Series SCVT

Single Check Testable Valve Assembly

Size: DN80-DN200

The units are testable and designed for installation on potable water connections in commercial fire system applications and protect against both backsiphonage and backpressure of polluted water into the potable water supply. Available in flanged and grooved configuration.

Features

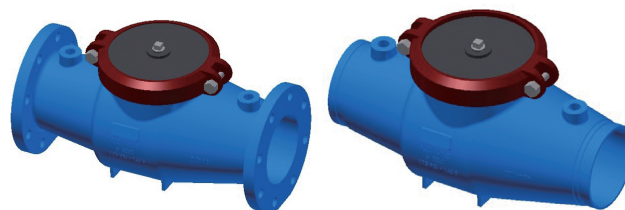
The devices are constructed from ductile iron and consist of one spring-loaded, center stem, guided check valve. Two BSP tapped holes are located one upstream and one downstream of the check valve for testing or the installation of a by-pass assembly. For ease of servicing the devices have a single top access cover utilizing a grooved pipe coupling and the check valve assembly is replaceable.

Pressure - Temperature

- Max. Working Pressure: 1200 kPa
- Max. Working Temperature: 60°C
- Hydrostatic Test Pressure: 2400 kPa

Material

Component	Material
Body	Ductile Iron
Access Cover	Ductile Iron
Polymers	Noryl™, NSF Listed
Elastomers	Silicone, Buna-N
Springs	Stainless Steel
CV Disc	Bronze
Coating	FDA approved fusion epoxy



Specification

- Design Standard: AS/NZS 2845.1
- End Connections : - Grooved (cut for steel pipe): AWWA C606
- Flanged: AS 2129-2000 - Table E
- Working Medium: Non corrosive liquids

Options

- G – Grooved pipe connection
- E – Australian flanged connection

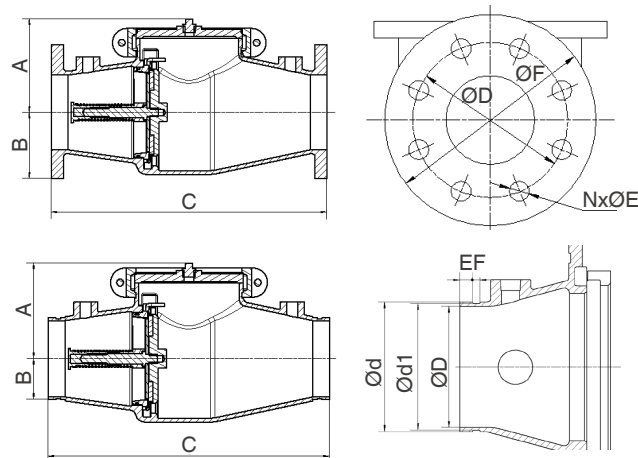
Approval



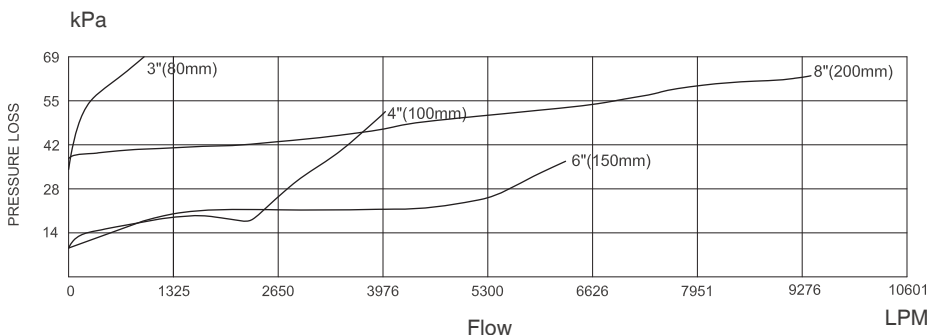
Installation Dimensions

SIZE		Type	A	B	C	ØD	ØF	NxØE	Weight (Kg)
mm	in.								
80	3	Flanged	127	85.7	406.4	146.1	185	4-Ø18	24
100	4	Flanged	150	107.95	419.1	177.8	215.9	8-Ø18	29
150	6	Flanged	193	139.7	571.5	235	279.4	8-Ø22	54
200	8	Flanged	226	168.3	698.5	292.1	333.5	8-Ø23	96

SIZE		Type	A	B	C	Ød	ØD	E	F	Weight (Kg)
mm	in.									
80	3	Grooved	127	44.45	406.4	88.9	72.6	15.9	7.9	18.5
100	4	Grooved	150	57.15	419.1	114.3	103.1	15.9	9.5	19
150	6	Grooved	193	82.55	571.5	165.1	154.0	15.9	9.5	41
200	8	Grooved	236	109.55	673.1	219.1	202.4	19.1	11.1	84



Characteristic Curve



Watts reserves the right to change or modify product design, construction, specifications, or materials without prior notice and without incurring any obligation to make such changes and modifications on Watts products previously or subsequently sold.

