

950  
2½" - 10"

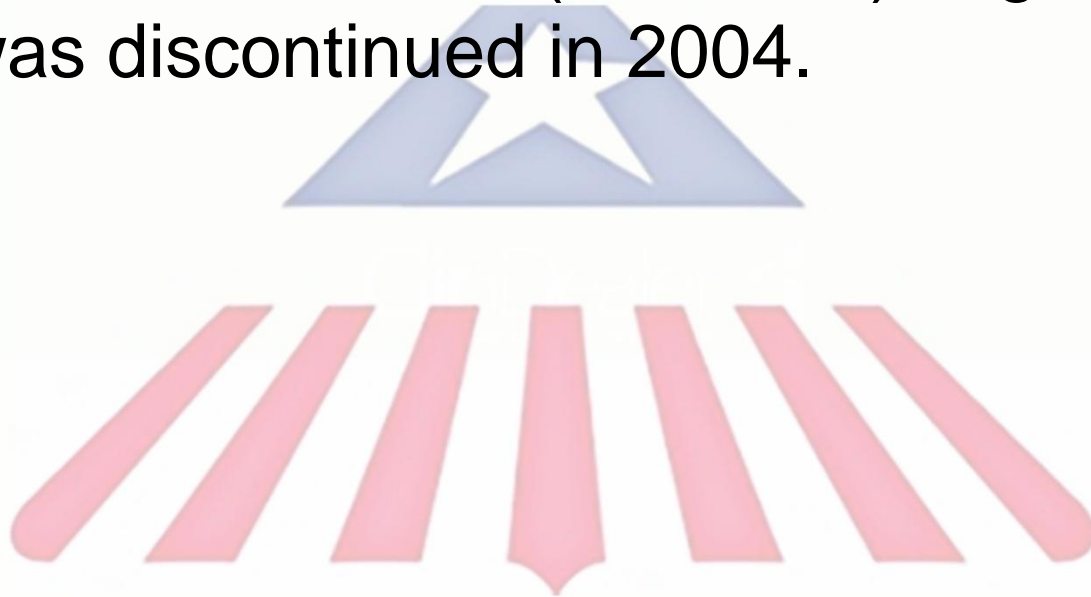


American Backflow  
Products Company

**WILKINS**  
a **ZURN** company

# Modification Overview

Production of the 950 (21/2"-10") began in 1990 and was discontinued in 2004.



# Check Cover Removal

Cover is o-ring sealed.

Loosen bolts 1/2".  
The spring load is now released from the cover and retained by the check subassembly.

\*\* Verify spring load before removing all the bolts.



# Check Valve Removal

Center stem guided  
check assembly.

Disc & spring  
subassembly.

Slide subassembly  
straight out of seat  
and body.

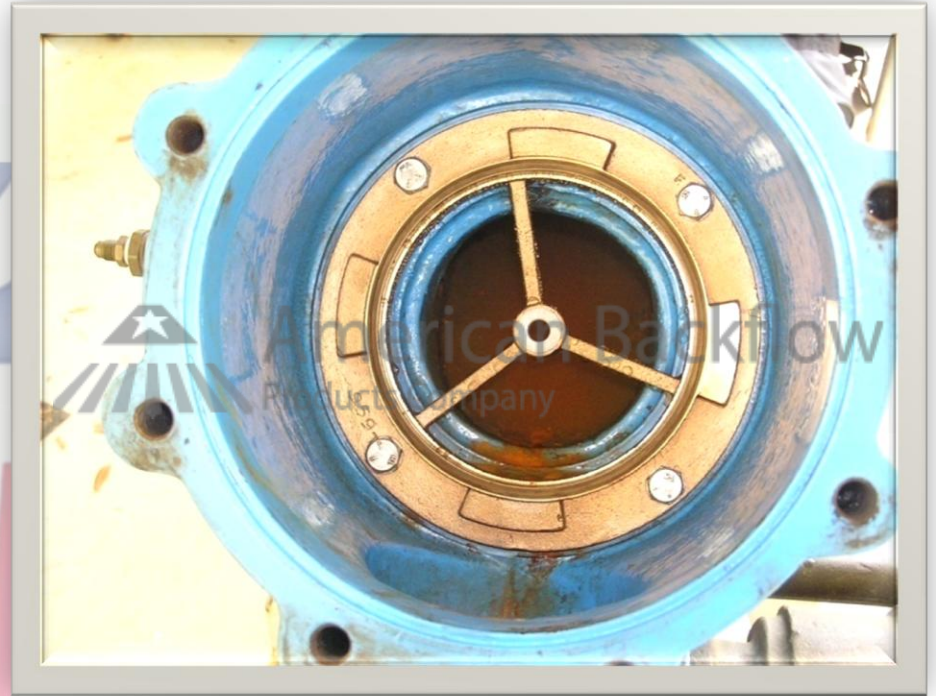


# Check Seat Removal

Seats are bolted into the body and o-ring sealed.

Remove the bolts and pull the seat straight out of the body.

4"-10" - Inspect plastic guide bushing in center of seat.



# Check Disc Replacement

Remove retaining nut  
and disc retainer.



# Check Valve Reassembly Notes

Reassemble checks  
in reverse order.

Lubricate o-rings.



**American Backflow**  
Products Company